



POLYESTER COMPOSITE CORDEX STRAP



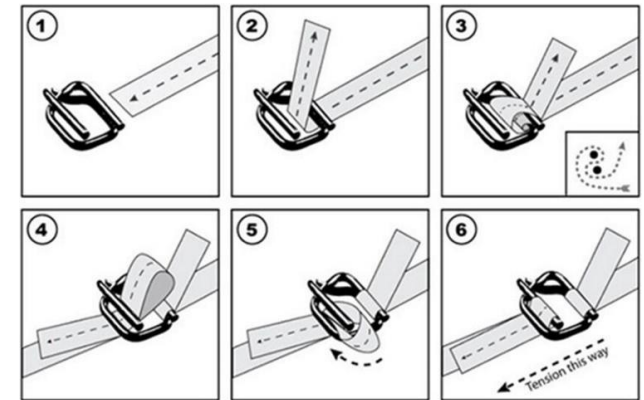
www.cordexpack.com



CORDEX STRAP – Polyester Composite Strapping is manufactured from co-extruded high tenacity polyester yarns embedded in a polymer coating. It is called polyester corded composite strapping due its composite structure. Due to its superior properties, composite strapping is preferred for heavy loads and loads carried under difficult conditions.

CORDEX STRAP : Polyester Corded Composite Strap's most important features:

- High strength
- Shock absorbent
- Does not get loose (high retained tension)
- Highly elastic and flexible
- No sharp edges that could damage your products
- Does not damage cargo
- Resistant to severe weather conditions and UV
- Cost-effective
- Light-weight
- Rust-proof, doesn't rust or corrode
- Resistant to chemicals
- Fast and easy to use
- Safe usage



How to Use Cordex Strap

To begin, wrap the composite strap around the crate or box. Next, insert the end of the strap through the steel buckle and around the open leg to form a loop. Ensure that the top strap is on the shorter end, and pull the top strap around the leg tightly. To apply tension, pull both ends of the strap in the opposite direction.

Composite Strap can be tightened by hand, a tensioning tool can be used to make it tighter. Tensioning tools for Composite Strap are available in manual, battery, and pneumatic versions.

place the tensioner about 30 cm below the buckle on the bottom strap, and then use the tensioner tool to squeeze the handle to raise the gripper foot. The bottom strap will go underneath the gripper foot, while the top strap will go through the housing cutter and then through the windlass.

After that, use the tensioner's handle to cut the strap. If the steel buckle is made up of high-quality steel, the legs of the buckle should close when the strap is tightened. .

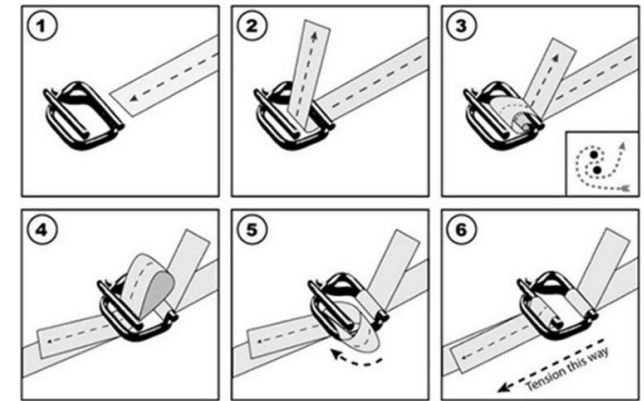


CORDEX STRAP - composite strapping should be used with our galvanized wire buckles. When used this way it has a considerably higher system breaking strength than textile strapping, woven Strapping, PET or PP strapping and it does not get loose during transportation. It allows your cargo to reach its destination without incurring any damages. The most important factor affecting the system breaking strength is the joint. CORDEXSTRAP composite strapping joint strength is around 75-90 %.

CORDEX STRAP composite strapping comes in a wide range of dimensions. We have products that can be used, depending on the type of application and the weight of the pallet, in different widths (from 13mm up to 40mm) and in various breaking strengths (from 250 kg up to 2600 kg.)

TARGET INDUSTRIES AND APPLICATION AREAS

These straps are mainly used in:
Aluminum and facade systems,
chemical industry,
glass industry,
stone and brick industry,
metal industry,
wood products and lumber industry and
parcel packaging sectors.



How to Use Cordex Strap

To begin, wrap the composite strap around the crate or box. Next, insert the end of the strap through the steel buckle and around the open leg to form a loop. Ensure that the top strap is on the shorter end, and pull the top strap around the leg tightly. To apply tension, pull both ends of the strap in the opposite direction.

Composite Strap can be tightened by hand, a tensioning tool can be used to make it tighter. Tensioning tools for Composite Strap are available in manual, battery, and pneumatic versions.

place the tensioner about 30 cm below the buckle on the bottom strap, and then use the tensioner tool to squeeze the handle to raise the gripper foot. The bottom strap will go underneath the gripper foot, while the top strap will go through the housing cutter and then through the windlass.

After that, use the tensioner's handle to cut the strap. If the steel buckle is made up of high-quality steel, the legs of the buckle should close when the strap is tightened. .

WHY USE ?



THE MOST
ECONOMICAL BRACING
SYSTEM AVAILABLE



VERY EASY TO USE



QUICK APPLICATION



QUALITY TESTED AND
INSPECTED



REUSABLE



RECYCLABLE



POLYESTER COMPOSITE STRAP



NEW GENERATION STRAPPING

SPECIFICATION :

POLYESTER COMPOSITE STRAP

TAG NO	WIDTH (mm)	NET WEIGHT / ROLL (KG)	NO OF ROLL / BOX	METER / BOX	NET WEIGHT / BOX	GROSS WEIGHT / BOX
CPC-13	13	8.75	2	2200	17.5	19.63
CPC-16	16	7.41	2	1700	14.82	18.13
CPC-19	19	9.50	2	1400	19.00	21.13
CPC-25	25	10.00	2	1000	20.00	22.13
CPC-32	32	8.40	2	600	16.80	18.08

WIRE BUCKLE

TAG NO	WIDTH (mm)	WIRE DIAMETER (mm)	QUANTITY / BOX	WEIGHT / BUCKLE (gm)	NET WEIGHT / BOX	GROSS WEIGHT / BOX
CWB-13	13	3.5	1000	10.5	10.50	10.93
CWB-16	16	3.5	1000	11.5	11.50	11.93
CWB-19	19	4	1000	19.0	19.00	19.75
CWB-25	25	5	500	37.0	18.50	19.25
CWB-32	32	7	250	84.5	21.13	21.88



Polyester Composite Strap

STRAPPING



www.cordexpack.com